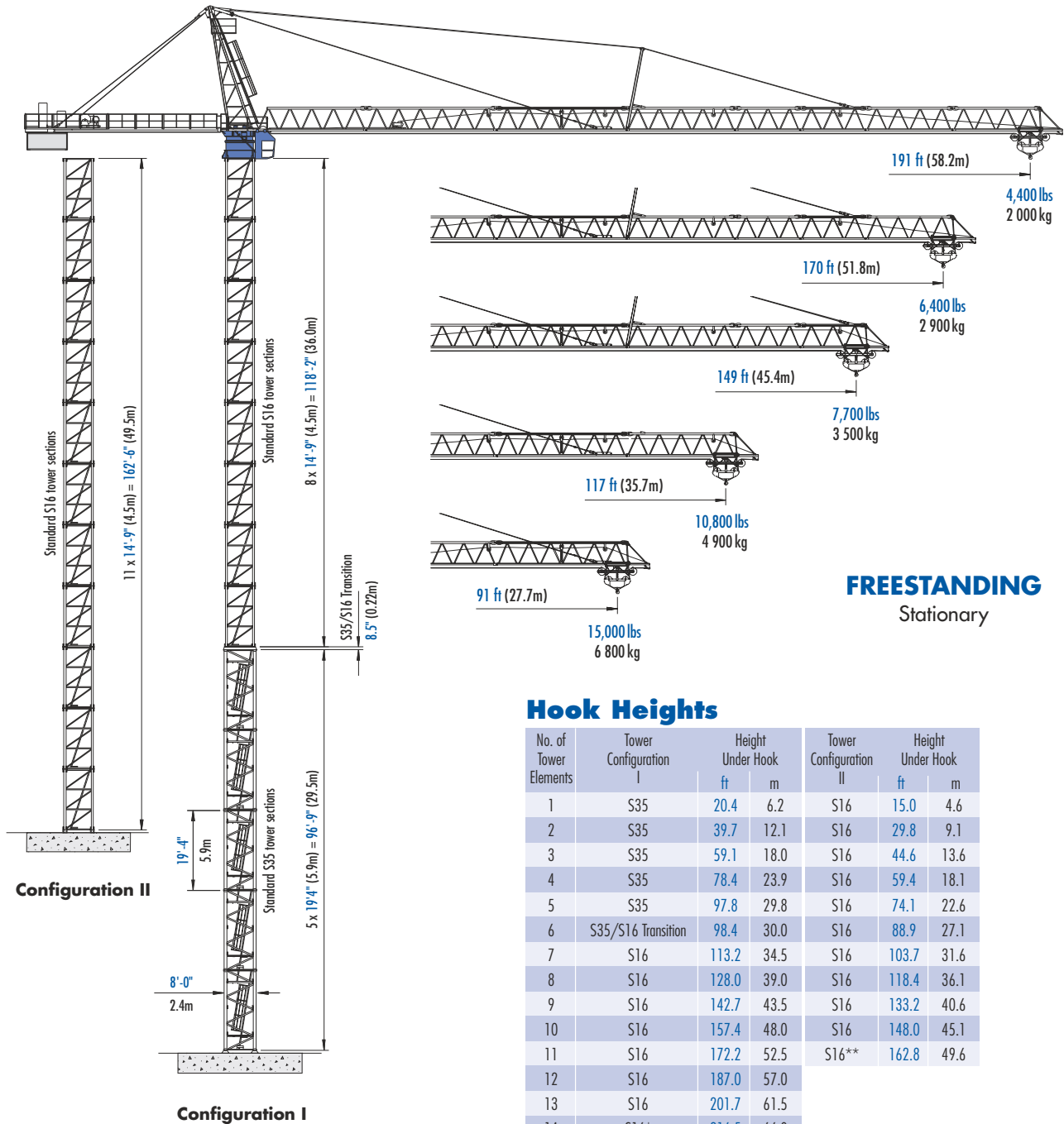


Pecco SK 170

TOWER CRANE



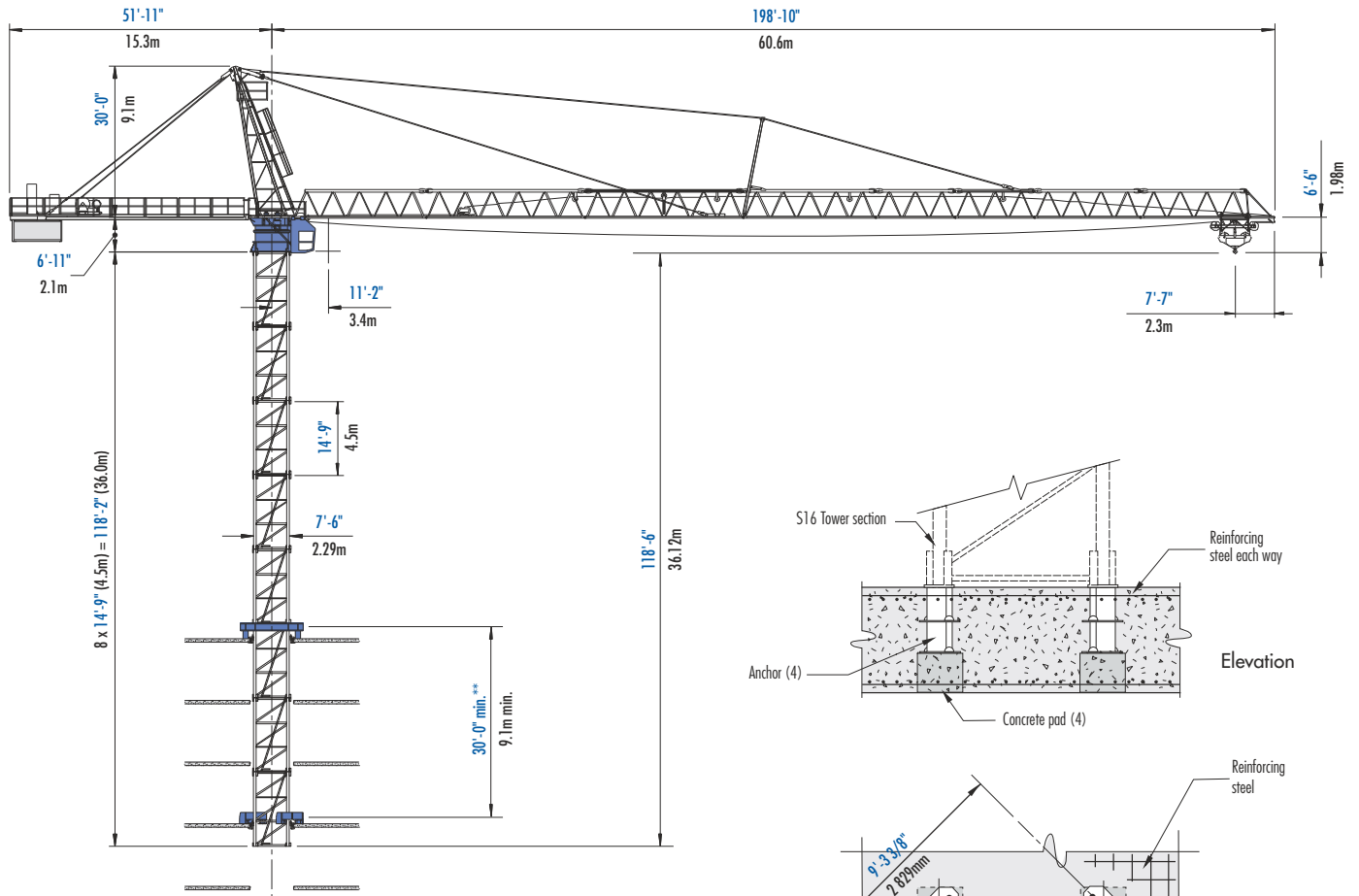
* Remove top climbing unit from crane prior to operating crane at maximum hook height.

** Lower top climbing unit to base of crane prior to operating crane at maximum hook height.

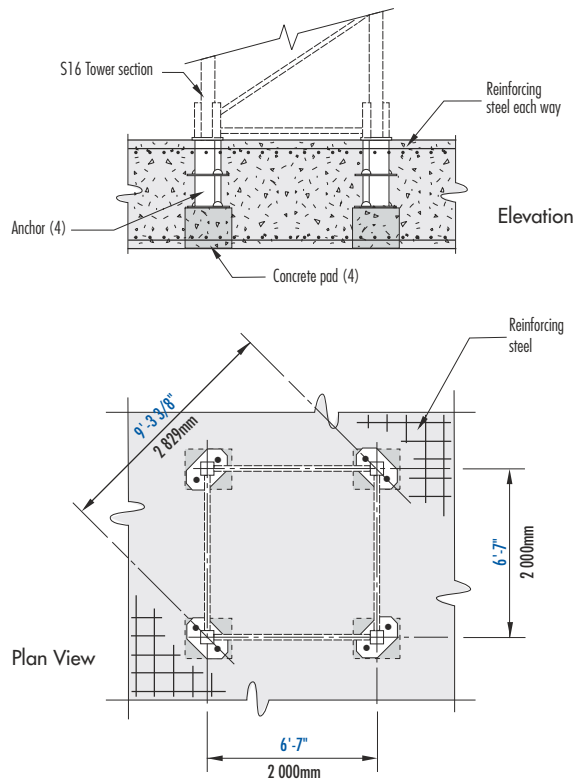
Other tower combinations are possible. Contact Morrow Equipment for additional information.

Configurations

Pecco SK 170



BOTTOM CLIMBING
with S16 Tower Sections
Inside Structure



FOUNDATION DETAILS
with S16 Tower Sections
Concrete Slab

IMPORTANT! Please consult crane's operation manual before erecting, operating, climbing and dismantling crane.

Configurations

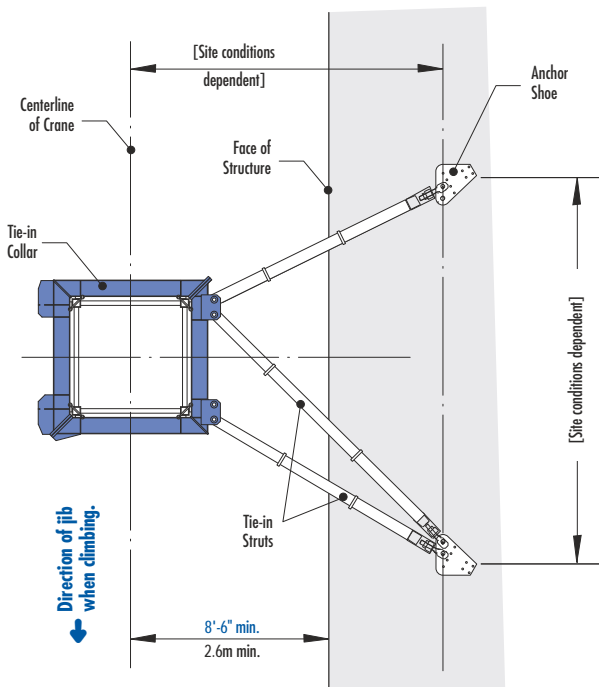
Pecco SK 170

NOTE! If hook height exceeds 330 ft (100m), the number of tower sections above the uppermost tie-in location **MUST** be reduced by 1 tower section.

* Lower the top climbing unit to the uppermost tie-in prior to operating crane at maximum hook height.

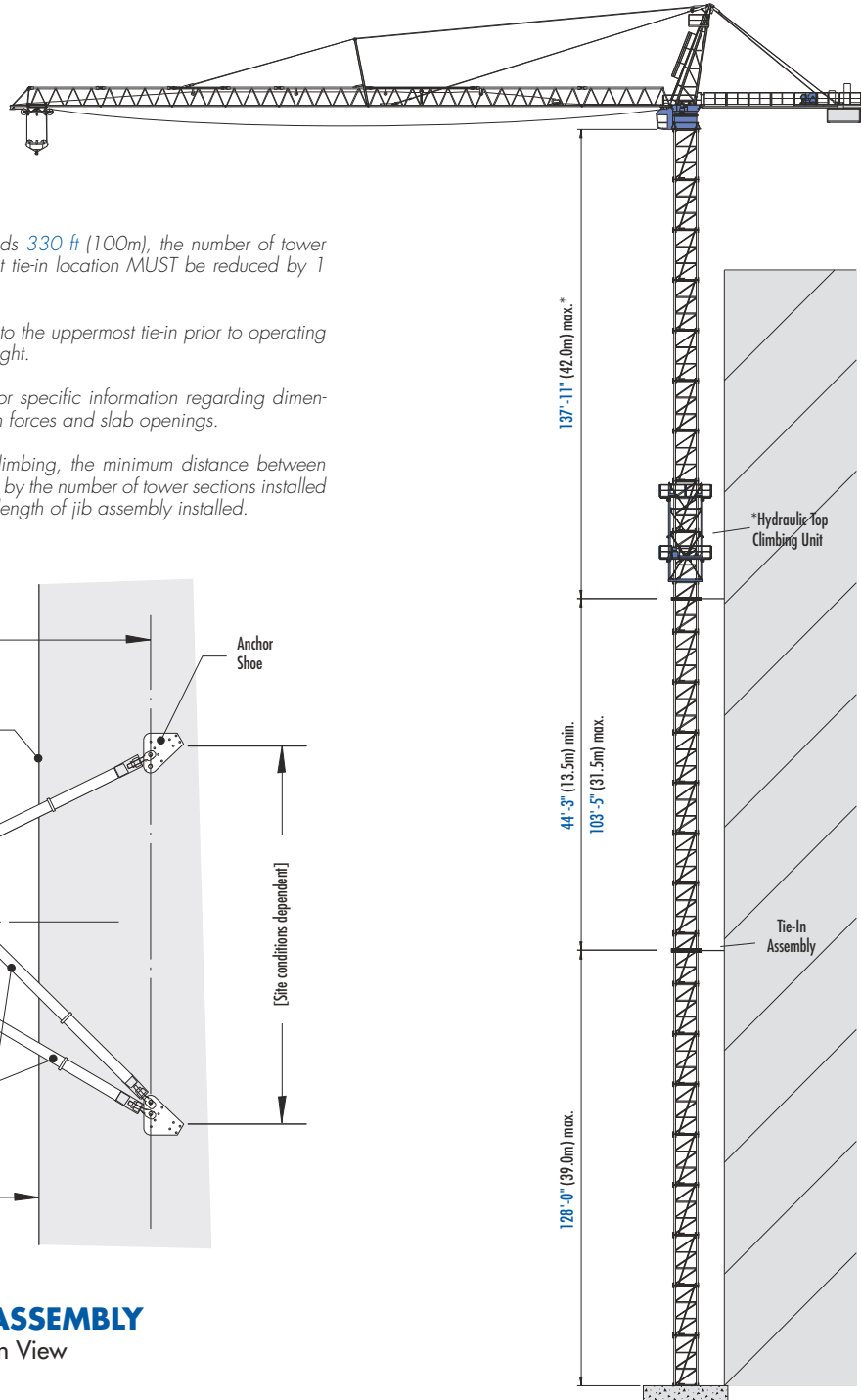
Consult Morrow Equipment for specific information regarding dimensions, tie-in locations, reaction forces and slab openings.

** **NOTE!** When bottom climbing, the minimum distance between climbing frames is determined by the number of tower sections installed above uppermost frame and length of jib assembly installed.



TIE-IN ASSEMBLY
Plan View

NOTE! The tie-in assembly shown above is an example of a typical installation. Please note, however, that factors determining the installation of tie-in assemblies may vary due to project specific criteria.



TOP CLIMBING
with S16 Tower Sections
Tied to Structure

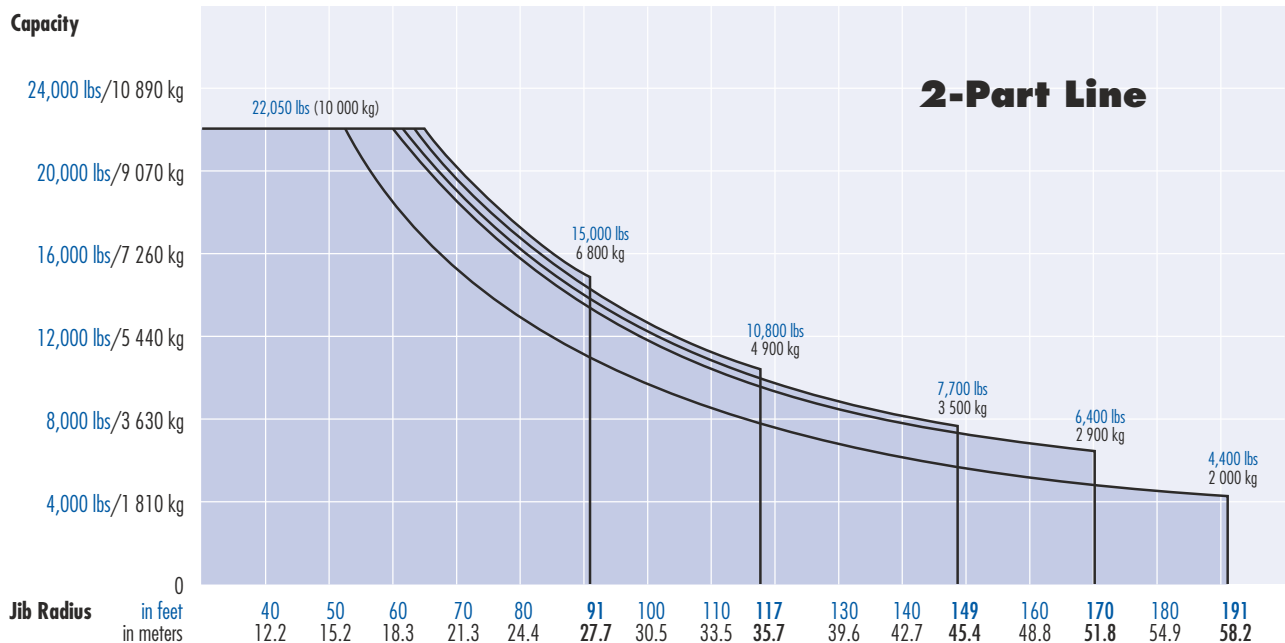
Radius and Capacities

Pecco Tower Crane Model SK 170

2-Part Line

Hook Radius	Maximum Capacity – Radius	ft	50	60	70	80	85	91	95	100	110	117	130	140	149	160	170	180	191	
		m	15.2	18.3	21.3	24.4	25.9	27.7	29.0	30.5	33.5	35.7	39.6	42.7	45.4	48.8	51.8	54.9	58.2	
191 ft 58.2m	22,050 lbs – 52 ft 10 000 kg – 15.8m	lbs kg	22,050 10 000	18,450 8 370	15,500 7 030	13,200 5 990	12,300 5 580	11,200 5 080	10,800 4 900	10,100 4 580	9,000 4 080	8,200 3 720	7,200 3 270	6,500 2 950	6,000 2 720	5,300 2 400	5,000 2 270	4,600 2 090	4,400 2 000	
170 ft 51.8m	22,050 lbs – 60 ft 10 000 kg – 18.3m	lbs kg	22,050 10 000	22,050 10 000	18,500 8 390	15,800 7 170	14,700 6 670	13,400 6 080	12,800 5 810	12,000 5 440	10,700 4 850	9,800 4 450	8,700 3 950	8,000 3 630	7,300 3 310	6,700 3 040	6,400 2 900			
149 ft 45.4m	22,050 lbs – 61 ft 10 000 kg – 18.7m	lbs kg	22,050 10 000	22,050 10 000	18,900 8 570	16,200 7 350	15,000 6 800	13,700 6 210	13,100 5 940	12,400 5 620	11,000 4 990	10,000 4 540	8,900 4 040	8,200 3 720	7,700 3 500					
117 ft 35.7m	22,050 lbs – 64 ft 10 000 kg – 19.4m	lbs kg	22,050 10 000	22,050 10 000	19,700 8 940	17,000 7 710	15,700 7 120	14,500 6 580	13,800 6 260	13,000 5 900	11,500 5 220	10,800 4 900								
91 ft 27.7m	22,050 lbs – 65 ft 10 000 kg – 19.9m	lbs kg	22,050 10 000	22,050 10 000	20,300 9 210	17,500 7 940	16,300 7 390	15,000 6 800												

Capacity



SPECIFICATIONS

Pecco Tower Crane Model SK 170

Hoist Speed and Capacity

Hoist Unit	2-Part Line				
105 hp (78 kW) AC hoist unit 4-speed gearbox Remote-controlled gear shifting Eddy current brake	Gear	Capacity	Line Speed	Capacity	Line Speed
	1	up to 22,050 lbs	@ 100 fpm	up to 10 000 kg	@ 30 m/min
	2	up to 15,000 lbs	@ 200 fpm	up to 6 800 kg	@ 60 m/min
	3	up to 9,260 lbs	@ 282 fpm	up to 4 200 kg	@ 86 m/min
	4	up to 5,500 lbs	@ 440 fpm	up to 2 500 kg	@ 134 m/min

2P120

NOTE! Capacities and line speeds indicated will vary depending on the amount of hoist rope installed. This crane model may be equipped with a hoist unit other than that specified in the data above. To verify, check the serial number of the crane and refer to the Pecco SK 170 Operation Manual for additional information.

Motor Information

Drive Unit	Horsepower	Kilowatts	Speed	
Trolley (2-part line)	6.5 hp	4.8 kW	16 – 250 fpm	5 – 76 m/min
Swing	2 x 6.5 hp	2 x 4.8 kW	1.0 rpm	







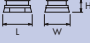


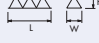
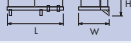
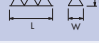

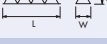
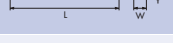

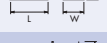
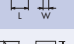

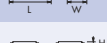




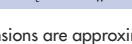

Power Requirements

480 Volts — 3-phase — 60-cycle — 250 Amperes service with 105 hp (78 kW) hoist unit

Specifications subject to change without notice. For other configurations and specifications, contact Morrow Equipment.

Component List

Pecco SK 170

Description	Dimensions L x W x H	Weight	Description	Dimensions L x W x H	Weight
Tower Top	 31'-2" x 5'-8" x 5'-9" 9.5m x 1.73m x 1.75m	6,700 lbs 3 040 kg	Jib Section ①	 26'-9" x 5'-9" x 6'-8" 8.15m x 1.75m x 2.03m	3,800 lbs 1 725 kg
Turntable (Complete) Upper & Lower Part	 9'-2" x 8'-5" x 8'-1" 2.79m x 2.57m x 2.47m	14,500 lbs 6 575 kg	Jib Section ②	 32'-0" x 5'-9" x 6'-3" 9.75m x 1.75m x 1.91m	5,200 lbs 2 360 kg
Turntable Upper Part ¹	 9'-2" x 8'-4" x 4'-6" 2.79m x 2.55m x 1.38m	6,900 lbs 3 130 kg	Jib Section ③	 32'-0" x 5'-9" x 6'-3" 9.75m x 1.75m x 1.91m	3,900 lbs 1 770 kg
Turntable Lower Part ²	 8'-6" x 8'-5" x 3'-7" 2.6m x 2.57m x 1.1m	7,600 lbs 3 450 kg	Jib Section ④	 26'-9" x 5'-9" x 6'-3" 8.15m x 1.75m x 1.91m	2,900 lbs 1 315 kg
Operator's Cab	 4'-11" x 3'-11" x 5'-5" 1.5m x 1.2m x 1.65m	900 lbs 410 kg	Jib Section ⑤	 16'-3" x 5'-9" x 6'-3" 4.95m x 1.75m x 1.91m	1,300 lbs 590 kg
Cab Access Platform	 10'-9" x 6'-7" x 5'-0" 3.27m x 2.0m x 1.52m	1,470 lbs 665 kg	Jib Section ⑥	 19'-8" x 5'-9" x 6'-8" 6.0m x 1.75m x 2.03m	1,400 lbs 635 kg
Counterjib ³ (Complete)	 47'-7" x 9'-0" x 4'-8" 14.5m x 2.74m x 1.42m	19,600 lbs 8 890 kg	Jib Section ⑦	 21'-6" x 5'-9" x 6'-3" 6.55m x 1.75m x 1.91m	2,200 lbs 1 000 kg
Counterjib without Hoist Unit	 43'-6" x 9'-0" x 1'-4" 13.25m x 2.74m x 0.4m	7,500 lbs 3 400 kg	Jib Section ⑧	 5'-11" x 5'-9" x 6'-8" 1.8m x 1.75m x 2.03m	700 lbs 315 kg
Hoist Unit with Frame ⁴ (105 hp/78 kW)	 15'-6" x 8'-1" x 3'-6" 4.7m x 2.46m x 1.07m	12,100 lbs 5 490 kg	Jib Assembly Part 1 ⁵ for Jibs 149-ft to 191-ft ①②③	89'-3" x 5'-9" x 6'-8" 27.2m x 1.75m x 2.03m	15,600 lbs 7 075 kg
Counterweight Block	 9'-10" x 10" x 7'-6" 3.0m x 0.25m x 2.29m	8,660 lbs 3 930 kg	Jib Assembly Part 2 ⁶ 191-ft (58.2m) ④⑤⑥⑦⑧	105'-0" x 5'-9" x 6'-8" 32.0m x 1.75m x 2.03m	12,200 lbs 5 535 kg
Tower Section S16	 14'-11" x 7'-7" x 7'-7" 4.55m x 2.3m x 2.3m	5,500 lbs 2 500 kg	Jib Assembly Part 2 ⁶ 170-ft (51.8m) ④⑤⑥⑦⑧	84'-0" x 5'-9" x 6'-8" 25.6m x 1.75m x 2.03m	10,000 lbs 4 535 kg
Tower Section S35	 19'-5" x 7'-10" x 8'-0" 5.92m x 2.4m x 2.44m	8,900 lbs 4 040 kg	Jib Assembly Part 2 ⁶ 149-ft (45.4m) ④⑤⑥⑧	63'-0" x 5'-9" x 6'-8" 19.2m x 1.75m x 2.03m	7,800 lbs 3 540 kg
Transition Section S35/S16	 8'-1" x 7'-9" x 1'-1" 2.46m x 2.36m x 0.33m	1,610 lbs 730 kg	Jib Assembly (Complete) ⁷ 117-ft (35.7m) ①②③④⑧	120'-9" x 5'-9" x 6'-8" 36.8m x 1.75m x 2.03m	19,200 lbs 8 710 kg
Trolley	 9'-6" x 6'-9" x 3'-6" 2.9m x 2.06m x 1.07m	1,100 lbs 500 kg	Jib Assembly (Complete) ⁷ 91-ft (27.7m) ①②③⑧	94'-6" x 5'-9" x 6'-8" 28.8m x 1.75m x 2.03m	16,300 lbs 7 395 kg
Hook Block	 2'-5" x 1'-2" x 5'-7" 0.73m x 0.36m x 1.57m	700 lbs 315 kg	Jib A-frame	 20'-0" x 9" x 4'-6" 6.1m x 0.23m x 1.37m	600 lbs 270 kg
Top Climbing Unit with Hydraulics (S16)	 23'-6" x 9'-9" x 9'-3" 7.16m x 2.97m x 2.82m	13,200 lbs 5 990 kg	Tie-in Collar (S16)	 10'-11" x 1'-7" x 10'-2" 3.33m x 0.48m x 3.1m	3,300 lbs 1 500 kg

NOTE: Weights and dimensions are approximate. Scale components before lifting.

- ¹ Turntable Upper Part includes swing motors. Does not include slewing ring and slewing ring support.
- ² Turntable Lower Part includes slewing ring and slewing ring support. Does not include Upper Part and swing motors.
- ³ Includes 105 hp (78 kW) hoist unit with frame, electrical panel, handrails and suspension. Does not include wire rope.
- ⁴ Does not include wire rope.
- ⁵ Jib Assembly Part 1 includes jib sections, pendant cables, trolley drive unit, trolley wire rope, trolley and hook block.
- ⁶ Jib Assembly Part 2 includes jib sections, pendant cables and Jib A-frame.
- ⁷ Jib Assembly (Complete) includes jib sections, pendant cables, trolley drive unit, trolley wire rope, trolley and hook block.